

BIGGER. SHARPER. BOLDER.



INTRODUCING REALWEAR NAVIGATOR™ 520
WITH HYPERDISPLAY

*THAN REALWEAR NAVIGATOR 500

RealWear Navigator™ 520 is the latest device in the RealWear Navigator™ 500 Series. Our new flagship wearable offers an upgraded display while maintaining the features of the RealWear Navigator 500 that you know and love, making it our best wearable yet.

BUILT FOR PRODUCTIVITY. DESIGNED FOR SAFETY.

Full-Shift, Hands-Free Use

Work comfortably all day with a full-shift battery. Keep your hands free and your vision unobstructed for maximum safety.

Revolutionary Modular Design

Expand your functionality and tackle even more issues using accessories such as our Thermal Camera Module.

Enhanced Remote Collaboration

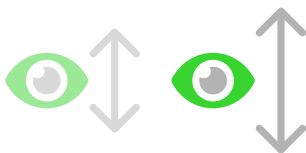
Harness the power of over 200 voice-optimized apps to improve productivity, save travel costs, and reduce equipment downtime.

Secure and Seamless

Get your devices deployed easily and managed securely with the support of RealWear Cloud and MDMs such as Microsoft Intune.



EXPERIENCE BETTER VIEWABILITY*



Longer Eye Relief

With longer eye relief, you can position the display farther from your eye to see the screen more easily.



Larger Eye Box

With a larger eye box, you can more easily find the perfect viewing angle.



Higher Resolution

Get sharper visuals and better color reproduction from a larger High Definition display.

*Than RealWear Navigator 500

SIDE-BY-SIDE COMPARISON

COREDISPLAY

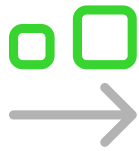
REALWEAR NAVIGATOR 500

HYPERDISPLAY

REALWEAR NAVIGATOR 520

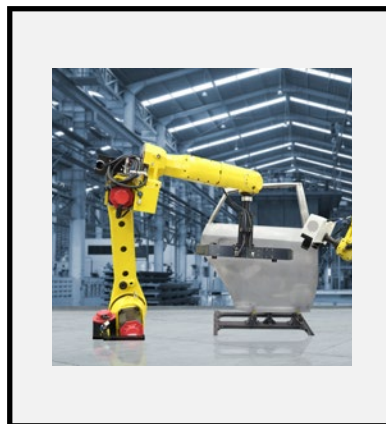
WVGA (854x480)	RESOLUTION	HD (1280x720)
20°	FIELD OF VIEW	24°
20mm	EYE RELIEF	30mm
8x5mm	EYE BOX	14x14mm
0.32"	DISPLAY SIZE	0.35"

INTRODUCING THE **HYPERDISPLAY**



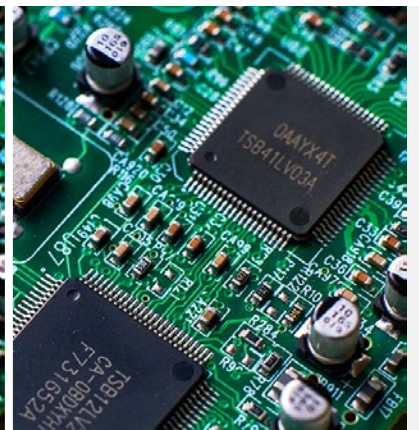
Bigger

Experience a 20% larger screen* while maintaining awareness for the best of both worlds.



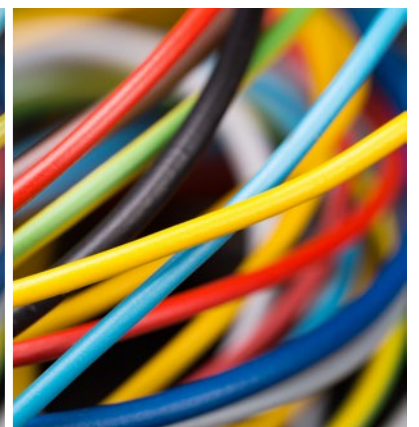
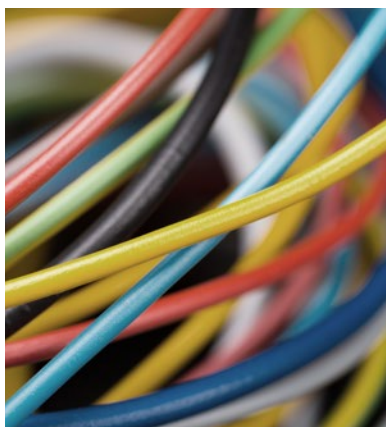
Sharper

With twice the resolution*, see text, graphics, and your environment in more detail.



Bolder

HyperDisplay offers bolder, brighter, more accurate color representation*.



*Than RealWear Navigator 500

Comparison for illustrative purposes only. Actual experience may vary.

TECHNICAL SPECIFICATIONS - REALWEAR NAVIGATOR 520

GENERAL

Operating System	Android 11 (AOSP) + WearHF™ hands-free interface + Enterprise features
Chipset	2.0 GHz 8-core Qualcomm® Snapdragon™ 662 with Adreno 610 GPU - OpenGL® ES 3.2 & OpenCL™ 2.0
Memory	64GB internal storage / 4GB RAM / MicroSD slot (max card supported 512GB)
Weight	9.7oz/274g
Ruggedization	IP66, MIL-STD-810H, 6.5 feet / 2-meter drop
Dedicated Buttons	Power button (with integrated fingerprint sensor), Programmable: action button, left button, right button
Ports	1/8" / 3.5mm audio, 1 USB Type-C
Boom Arm	Adjusts six ways for most head sizes, left or right eye compatible, display can be moved out of way when not in use
Operating Temperature, Humidity	-4°F to +122°F / -20°C to +50°C, 5% to 95% relative humidity (non-condensing)
Included Applications	Document Navigator, Camera with Barcode Reader, Audio Recorder, Video Recorder, Webpage Viewer, Cloud Sync, Media Player, Calculator, Pedometer, Timer
Languages & Dialects Supported	Chinese (Cantonese, Mandarin-Simplified and Traditional), Czech, Dutch, English (American, Australian, British), French, German, Indonesian, Italian, Japanese, Korean, Polish, Portuguese, Russian, Spanish, Thai
Sign-in Options	Companion App, Voice Keyboard with secure mode

CONNECTIVITY & SENSORS

Bluetooth	Bluetooth® 5.1
Wi-Fi	802.11 a/b/g/n/ac - 2.4 GHz and 5GHz
GPS and Location	<ul style="list-style-type: none">• GPS, Glonass, BeiDou, Galileo, QZSS, and SBAS• NavIC support• Dual-Frequency GNSS (L1 + L5)• Qualcomm® Sensor-Assisted Positioning
IMU - Head Movement Tracking	3 IMUs (including 3-axis accelerometers, gyroscopes, eCompass)

BATTERY

Capacity	2,600 mAh / 10.0 Wh Li-polymer, rechargeable, hot-swappable
----------	---

SECURITY

Security	Qualcomm® Trusted Execution Environment, Crypto Engine, Secure Boot
----------	---

DISPLAY

Type	24° field-of-view, 24-bit color LCD, 0.35-inch diagonal, outdoor visible
Resolution	HD (1280X720)

AUDIO

Microphone	4 digital microphones with active noise cancellation Accurate voice recognition in noise up to 100 dBA
Speaker	Internal 94 dBA loudspeaker

CAMERA

Image	48 MP Sensor, PDAF with LED flashlight
Video	Up to 1080p @ 60fps, >6X zoom in HD, video stabilization. codecs: VP8, VP9, H.264, H.265 HEVC

COMPATIBILITY

PPE	Works with many hard hats, protective eyewear, masks and more
-----	---

WARRANTY

Warranty	1-Year Warranty
Extended Service & Support Plans	Available

ACCESSORIES

Included	Workband, USB Type-C charging cable
----------	-------------------------------------

CLOUD SERVICES

RealWear Cloud	Accelerates centralized deployment and management of devices
----------------	--



realwear.com/navigator